



ISO 9001 CERTIFIED



34104
NANO PRIME
Engine & Oil
Additive
500 mL

NANO PRIME™^{MC} ENGINE & OIL ADDITIVE

Nano Prime™ is Rislone's most advanced engine + oil additive ever - it's unlike anything else on the market period. Perfect for new and older vehicles **Rislone Nano Prime Engine & Oil Additive** gives the extra protection needed for today's lighter-weight oils.

This unique Rislone additive uses a fully-formulated GF-5/SN-rated synthetic motor oil carrier that is backwards-compatible with all vehicles. It contains a base synthetic oil to help improve mileage & performance while decreasing emissions. It is designed to work fully with all oil viscosity grades including 0W-20, 0W-30, 5W-20, 5W-30, 5W-40, 10W-30, 15W-40 and all others.

This formula is enhanced with synthetic additives including nano-tungsten and moly friction modifiers, anti-wear agents, extreme pressure additives plus Rislone's famous detergent and dispersant package.

INSTRUCTIONS FOR USE

For best protection use with every other oil change. With the engine off, remove your oil fill cap and pour **Rislone Nano Prime Engine & Oil Additive** into engine per dosage chart. May be used any time, at or between oil changes. Do not overfill. **Safe to use on all vehicles and will not void manufacturer's new vehicle warranty.**

WHAT IS NANO?

The International System of Units states that "nano" is a prefix that means "one billionth." A nanometer is one-billionth of a meter. For comparison, a sheet of paper is 100,000 nanometers thick.

There are hundreds of products that contain nanomaterials. Some examples would be batteries, anti-bacterial clothing, and chemical coatings such as UV filters in sunscreens.

DOSAGE

One bottle treats 4 to 6.5 liters of oil for regular vehicles. For larger engines, use 1 bottle for every 5.5 liters of capacity. On 4-stroke ATV, motorcycle and small engines, use approximately 90 mL per quart of oil capacity.

Do not use in wet clutch applications, as this reduces friction too effectively.

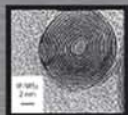


ISO 9001 CERTIFIED

WHAT MAKES OUR NANOTECHNOLOGY DIFFERENT?

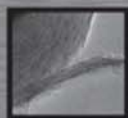
All engine metal has rough contact surfaces, including new and high-mileage vehicle's.

A Look Under the Microscope



Extremely Small Tungsten Nano Spheres

30-130 billionths of a meter



Under stress, our nano particles have the ability to shed their layers



These Spheres and Layers Fill and Smooth Rough

Rislone nano-spheres are designed with a unique round shape for a smooth rolling action, which creates a spring-like cushion for extreme protection. Rislone Nano Prime technology also dramatically enhances anti-friction properties while coating metal surfaces, giving an extra layer of protection to your engine.



BEFORE



AFTER



Dramatically enhances anti-friction properties



Coats metal surfaces giving an extra layer of protection



Unique round shape for rolling effect



Creates a spring like cushion for extreme protection



TREATS METAL

Nano Tungsten and Moly Reduce Friction Up to 38%



LUBRICATES

Anti-Wear Additives Reduce Internal Wear up to 37%



PROTECTS

Defends Against Overheating and Engine Damage



TURBO POWER

100% Maximum Horsepower for Increased Performance



FUEL EFFICIENT

Less Friction = Better Fuel Economy & Less Emissions

BENEFITS OF RISLONE NANO PRIME

- Features MoS₂ with WS₂ Nano Technology
- Increases Horsepower & Torque
- Reduces Engine Friction, Heat & Wear
- Repairs by Filling & Coating Rough and Worn Metal Surfaces
- Cleans and Prevents Sludge

TEST	ASTM	TYPICAL PROPERTIES
Specific Gravity @ 15.6°C	D-4052	0.84
Density @ 15.6°C	D-4052	7.06
Viscosity Index	D-445	338.23
Pour Point (Celsius)	D-5949	-42°C
Flash Point (Celsius)	D-93 Proc. A	146°C
Kinematic Viscosity, cSt @ 40°C	D-446	48.59
Kinematic Viscosity, cSt @ 100°C	D-445	15.65