



ISO 9001 CERTIFIED

# NANO PRIME™ ENGINE & OIL ADDITIVE

Nano Prime™ is Rislone's most advanced engine + oil additive ever - it's unlike anything else on the market period. Perfect for new and older vehicles **Rislone Nano Prime Engine & Oil Additive** gives the extra protection needed for today's lighter-weight oils.

This unique Rislone additive uses a fully-formulated GF-5/SN-rated synthetic motor oil carrier that is backwards-compatible with all vehicles. It contains a base synthetic oil to help improve mileage & performance while decreasing emissions. It is designed to work fully with all oil viscosity grades including 0W-20, 0W-30, 5W-20, 5W-30, 5W-40, 10W-30, 15W-40 and all others.

This formula is enhanced with synthetic additives including nano-tungsten and moly friction modifiers, anti-wear agents, extreme pressure additives plus Rislone's famous detergent and dispersant package.



**4104**  
**NANO PRIME**  
**ENGINE & OIL**  
**ADDITIVE**  
16.9 FL OZ (500 mL)

## INSTRUCTIONS FOR USE

For best protection use with every other oil change. With the engine off, remove your oil fill cap and pour **Rislone Nano Prime Engine & Oil Additive** into engine per dosage chart. May be used any time, at or between oil changes. Do not overfill. **Safe to use on all vehicles and will not void manufacturer's new vehicle warranty.**

## WHAT IS NANO?

The International System of Units states that "nano" is a prefix that means "one billionth." A nanometer is one-billionth of a meter. For comparison, a sheet of paper is 100,000 nanometers thick.

There are hundreds of products that contain nanomaterials. Some examples would be batteries, anti-bacterial clothing, and chemical coatings such as UV filters in sunscreens.

## DOSAGE

One bottle treats 4.5 to 7 quarts of oil for regular vehicles. For larger engines, use 1 bottle for every 6 quarts of capacity. On 4-stroke ATV, motorcycle and small engines, use approximately 3 ounces per quart of oil capacity.

**Do not use in wet clutch applications, as this reduces friction too effectively.**

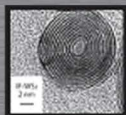


ISO 9001 CERTIFIED

## WHAT MAKES OUR NANO TECHNOLOGY DIFFERENT?

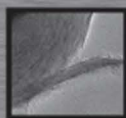
All engine metal has rough contact surfaces, including new and high-mileage vehicle's.

### A Look Under the Microscope

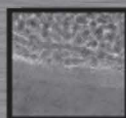


Extremely Small Tungsten Nano Spheres

30-130 billionths of a meter



Under stress, our nano particles have the ability to shed their layers

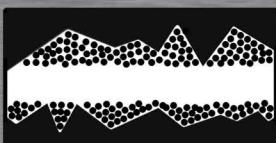


These Spheres and Layers Fill and Smooth Rough

Rislone nano-spheres are designed with a unique round shape for a smooth rolling action, which creates a spring-like cushion for extreme protection. Rislone Nano Prime technology also dramatically enhances anti-friction properties while coating metal surfaces, giving an extra layer of protection to your engine.



**BEFORE**



**AFTER**



Dramatically enhances anti-friction properties



Coats metal surfaces giving an extra layer of protection



Unique round shape for rolling effect



Creates a spring like cushion for extreme protection



### TREATS METAL

Nano Tungsten and Moly Reduce Friction Up to 38%



### LUBRICATES

Anti-Wear Additives Reduce Internal Wear up to 37%



### PROTECTS

Defends Against Overheating and Engine Damage



### TURBO POWER

100% Maximum Horsepower for Increased Performance



### FUEL EFFICIENT

Less Friction = Better Fuel Economy & Less Emissions

## BENEFITS OF RISLONE NANO PRIME

- Features MoS<sub>2</sub> with WS<sub>2</sub> Nano Technology
- Increases Horsepower & Torque
- Reduces Engine Friction, Heat & Wear
- Repairs by Filling & Coating Rough and Worn Metal Surfaces
- Cleans and Prevents Sludge

TEST	ASTM	TYPICAL PROPERTIES
Specific Gravity @ 15.6°C	D-4052	0.84
Density @ 15.6°C	D-4052	7.06
Viscosity Index	D-445	338.23
Pour Point	D-5949	-44°F (-42°C)
Flash Point	D-93 Proc. A	295°F (146°C)
Kinematic Viscosity, cSt @ 40°C	D-446	48.59
Kinematic Viscosity, cSt @ 100°C	D-445	15.65